

# The Condition of Education 2009

## Indicator 12

### *Reading Performance and Achievement Gaps*

The indicator and corresponding tables are taken directly from *The Condition of Education 2009*. Therefore, the page numbers may not be sequential.

Additional information about the survey data and supplementary notes can be found in the full report. For a copy of *The Condition of Education 2009*, visit the NCES website (<http://nces.ed.gov/pubsearch/pubsinfo.asp?pubid=2009081>) or contact ED PUBs at 1-877-4ED-PUBS.

Suggested Citation:

Planty, M., Hussar, W., Snyder, T., Kena, G., KewalRamani, A., Kemp, J., Bianco, K., Dinkes, R. (2009). *The Condition of Education 2009* (NCES 2009-081). National Center for Education Statistics, Institute of Education Sciences, U.S. Department of Education. Washington, DC.

# Reading Performance and Achievement Gaps

*National average reading scores of 4th- and 8th-graders were higher in 2007 than in 1992, by 4 and 3 points, respectively. However, the reading score of 12th-graders was 6 points lower in 2005 than in 1992.*

The percentage of 4th-graders performing at or above the *Basic* achievement level on the National Assessment of Educational Progress (NAEP) Reading Assessment was higher in 2007 than in 1992 (67 vs. 62 percent), as was the percentage performing at or above the *Proficient* achievement level (33 vs. 29 percent) (see table A-12-1). Percentages of 4th-graders at both of these achievement levels were also higher in 2007 than in 2005. Although the percentage of 8th-graders performing at or above *Basic* was higher in 2007 than in 1992 (74 vs. 69 percent), there was no measurable difference in the percentage of 8th-graders performing at or above *Proficient* in these 2 years. The percentage of 8th-graders performing at or above *Basic* was higher in 2007 than in 2005, but the percentages performing at or above *Proficient* in these 2 years were not measurably different. The percentage of 12th-graders performing at or above *Basic* was lower in 2005 than in 1992 (73 vs. 80 percent), as was the percentage of 12th-graders performing at or above *Proficient* (35 vs. 40 percent).

The national average reading scale score of 4th-graders was higher in 2007 than in 1992, by 4 points (see table A-12-2). The 2007 reading score was also higher than the scores in any of the previous assessment years. Average scores were higher in 2007 than in 1992 for White, Black, Hispanic, and Asian/Pacific Islander 4th-graders (ranging from 6 to 16 points). Although the reading achievement gap between White and Black 4th-graders was smaller in 2007 than in all previous assessments, the gap between White and Hispanic 4th-graders was not measurably different in 2007 than in 2005 or 1992. In 2007, at the 4th-grade level, Blacks scored, on average, 27 points lower than Whites, and Hispanics scored, on average, 26 points lower than Whites.

For 8th-graders, the national average reading scores were higher in 2007 than in 1992, by 3 points. Like the pattern for 4th-graders, the 8th-grade score in 2007 was higher than that in 2005. Average scores were higher in 2007 than in 1992 for White, Black, and Hispanic 8th-graders (ranging from 5 to 7 points). There were no measurable changes in the 8th-grade White-Black or White-Hispanic reading achievement gaps in 2007 compared with 1992 or 2005. In 2007, Blacks scored, on average, 27 points lower on the 8th-grade reading assessment than Whites, and Hispanics scored, on average, 25 points lower than Whites.

Students in grade 12 scored 6 points lower on the reading assessment in 2005 (the last year 12th-graders were assessed in reading) than in 1992, but their 2005 score was not measurably different from their 2002 score. Average scores were lower in 2005 than in 1992 for 12th-grade White, Black, and Hispanic students (ranging from 5 to 7 points). There were no measurable changes in the gaps between White students and their Black or Hispanic counterparts from 2005 to 1992 or 2002.

NAEP results also permit state-level comparisons of the reading abilities of 4th- and 8th-graders in public schools. The percentage of 4th-grade students performing at or above *Basic* was higher in 2007 than in 1992 in 24 of the 42 states that participated in both assessment years (see table A-12-3). Of the 37 states that participated in the grade 8 assessment in both 1998 (the earliest state assessment at that grade) and 2007, the percentage of students performing at or above *Basic* was higher in 2007 than in 1998 in 5 states and lower in 2007 than in 1998 in 7 states.



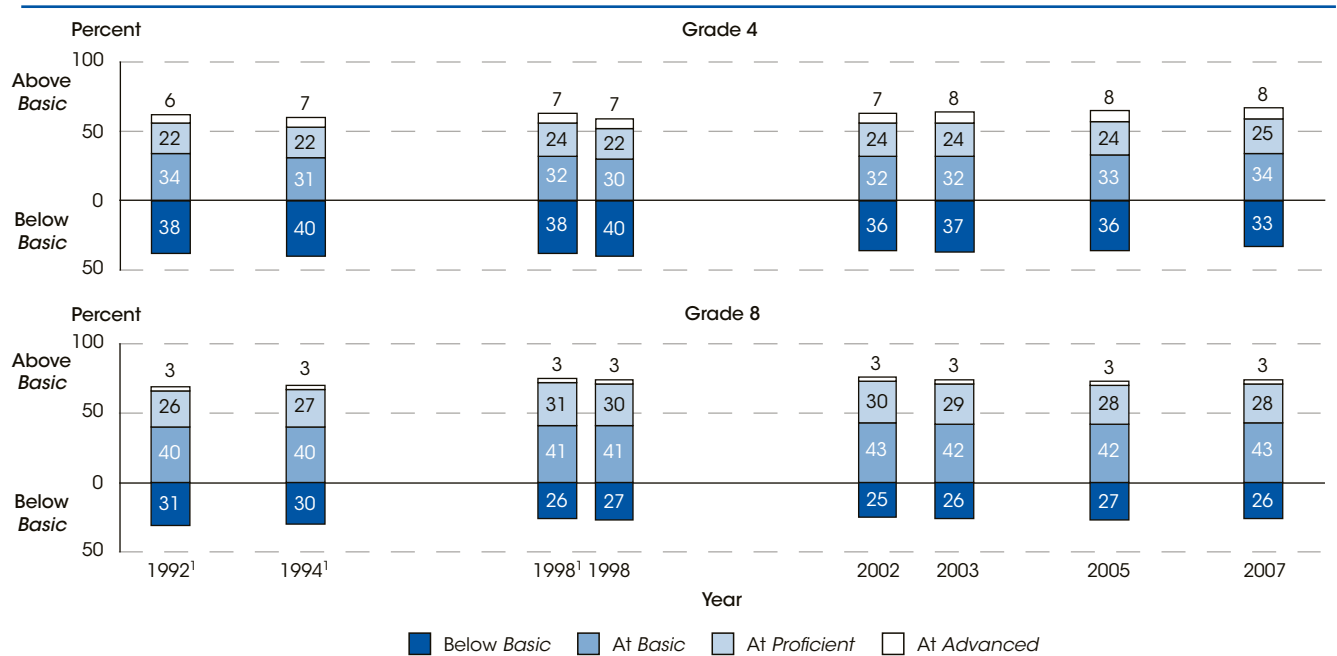
For more information: *Tables A-12-1 through A-12-3; Indicators 13 and 14*

## Technical Notes

NAEP reading scores range from 0 to 500. The achievement levels define what students should know and be able to do: *Basic* indicates partial mastery of fundamental skills; *Proficient* indicates demonstrated competency over challenging subject matter; and *Advanced* indicates superior performance. The 2007

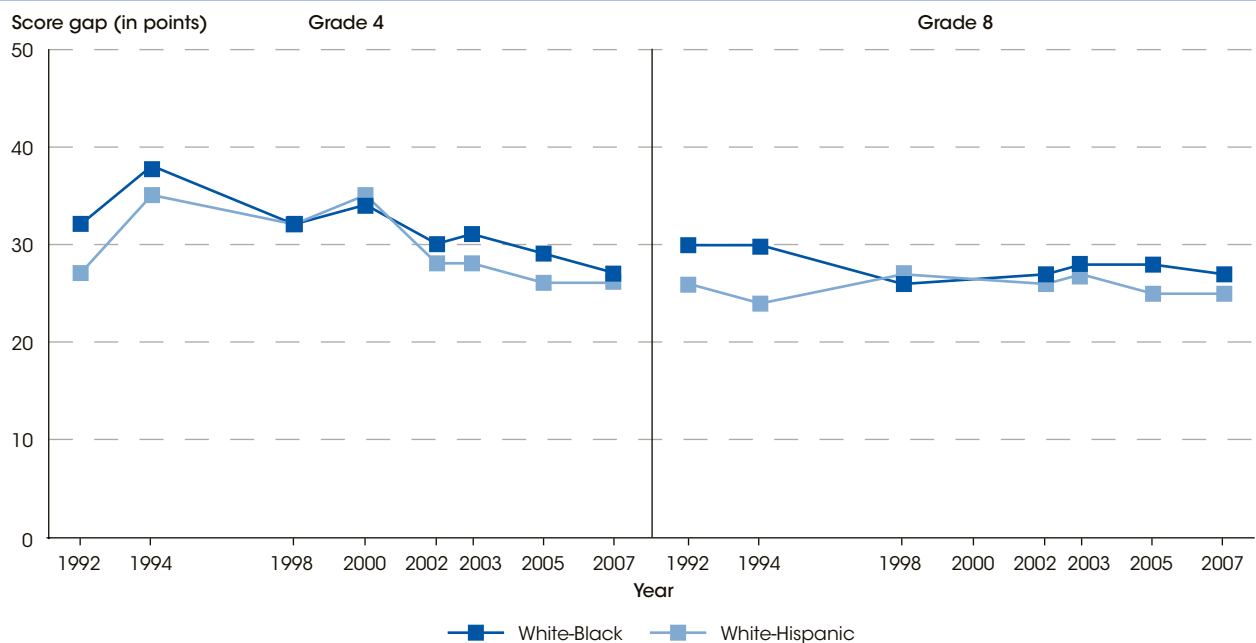
NAEP Reading Assessment was not administered to 12th-grade students. State samples were not collected for grade 12; therefore, state results for grade 12 are not available. For more information on NAEP, see *supplemental note 4*. For more information on race/ethnicity, see *supplemental note 1*.

**Figure 12-1. Percentage distribution of 4th- and 8th-grade students across NAEP reading achievement levels: Selected years, 1992-2007**



<sup>1</sup> Testing accommodations (e.g., extended time, small group testing) for children with disabilities and limited-English-proficient students were not permitted.  
 NOTE: The National Assessment of Educational Progress (NAEP) achievement levels define what students should know and be able to do: *Basic* indicates partial mastery of fundamental skills; *Proficient* indicates demonstrated competency over challenging subject matter; and *Advanced* indicates superior performance. For more information on NAEP, see *supplemental note 4*. Detail may not sum to totals because of rounding.  
 SOURCE: U.S. Department of Education, National Center for Education Statistics, National Assessment of Educational Progress (NAEP), selected years, 1992-2007 Reading Assessments, NAEP Data Explorer.

**Figure 12-2. Differences in White-Black and White-Hispanic 4th- and 8th-grade average reading scale scores: Selected years, 1992-2007**



NOTE: The National Assessment of Educational Progress (NAEP) reading scale ranges from 0 to 500. Student assessments are not designed to permit comparisons across subjects or grades. Race categories exclude persons of Hispanic ethnicity. The score gap is determined by subtracting the average Black or Hispanic score, respectively, from the average White score. For more information on NAEP see *supplemental note 4*. For more information on race/ethnicity, see *supplemental note 1*.  
 SOURCE: U.S. Department of Education, National Center for Education Statistics, National Assessment of Educational Progress (NAEP), selected years, 1992-2007 Reading Assessments, NAEP Data Explorer.

## Reading Performance and Achievement Gaps

**Table A-12-1. Average reading scale scores and percentage of students at each achievement level, by grade: Selected years, 1992-2007**

| Grade, scale score, and achievement level | 1992 <sup>1</sup> | 1994 <sup>1</sup> | 1998 <sup>1</sup> | 1998 | 2002 | 2003 | 2005 | 2007 |
|---|-------------------|-------------------|-------------------|------|------|------|------|------|
| <b>Grade 4</b>                            |                   |                   |                   |      |      |      |      |      |
| Average scale score                       | 217               | 214               | 217               | 215  | 219  | 218  | 219  | 221  |
| Percentage at each achievement level      |                   |                   |                   |      |      |      |      |      |
| Below <i>Basic</i>                        | 38                | 40                | 38                | 40   | 36   | 37   | 36   | 33   |
| At or above <i>Basic</i>                  | 62                | 60                | 62                | 60   | 64   | 63   | 64   | 67   |
| At or above <i>Proficient</i>             | 29                | 30                | 31                | 29   | 31   | 31   | 31   | 33   |
| At <i>Advanced</i>                        | 6                 | 7                 | 7                 | 7    | 7    | 8    | 8    | 8    |
| <b>Grade 8</b>                            |                   |                   |                   |      |      |      |      |      |
| Average scale score                       | 260               | 260               | 264               | 263  | 264  | 263  | 262  | 263  |
| Percentage at each achievement level      |                   |                   |                   |      |      |      |      |      |
| Below <i>Basic</i>                        | 31                | 30                | 26                | 27   | 25   | 26   | 27   | 26   |
| At or above <i>Basic</i>                  | 69                | 70                | 74                | 73   | 75   | 74   | 73   | 74   |
| At or above <i>Proficient</i>             | 29                | 30                | 33                | 32   | 33   | 32   | 31   | 31   |
| At <i>Advanced</i>                        | 3                 | 3                 | 3                 | 3    | 3    | 3    | 3    | 3    |
| <b>Grade 12<sup>2</sup></b>               |                   |                   |                   |      |      |      |      |      |
| Average scale score                       | 292               | 287               | 291               | 290  | 287  | —    | 286  | —    |
| Percentage at each achievement level      |                   |                   |                   |      |      |      |      |      |
| Below <i>Basic</i>                        | 20                | 25                | 23                | 24   | 26   | —    | 27   | —    |
| At or above <i>Basic</i>                  | 80                | 75                | 77                | 76   | 74   | —    | 73   | —    |
| At or above <i>Proficient</i>             | 40                | 36                | 40                | 40   | 36   | —    | 35   | —    |
| At <i>Advanced</i>                        | 4                 | 4                 | 6                 | 6    | 5    | —    | 5    | —    |

— Not available.

<sup>1</sup> Testing accommodations (e.g., extended time, small group testing) for children with disabilities and limited-English-proficient students were not permitted.

<sup>2</sup> The 2003 and 2007 National Assessment of Educational Progress (NAEP) Reading Assessments were not administered to 12th-grade students.

NOTE: The National Assessment of Educational Progress (NAEP) reading scale ranges from 0 to 500. Beginning in 2002, the NAEP national sample for grades 4 and 8 was obtained by aggregating the samples from each state and the District of Columbia, rather than by obtaining an independently selected national sample. As a consequence, the size of the national sample for grades 4 and 8 increased, and smaller differences between years or between types of students were found to be statistically significant than would have been detected in previous assessments. Detail may not sum to totals due to rounding. For more information on NAEP, see *supplemental note 4*.

SOURCE: U.S. Department of Education, National Center for Education Statistics, National Assessment of Educational Progress (NAEP), selected years, 1992-2007 Reading Assessments, NAEP Data Explorer.

**Table A-12-2. Average reading scale scores, by grade and selected student and school characteristics: Selected years, 1992-2007**

| Student or school characteristic                            | Grade 4           |            |            | Grade 8           |            |            | Grade 12 <sup>1</sup> |            |            |
|---|-------------------|------------|------------|-------------------|------------|------------|-----------------------|------------|------------|
|   | 1992 <sup>2</sup> | 2005       | 2007       | 1992 <sup>2</sup> | 2005       | 2007       | 1992                  | 2002       | 2005       |
| <b>Total</b>  | <b>217</b>        | <b>219</b> | <b>221</b> | <b>260</b>        | <b>262</b> | <b>263</b> | <b>292</b>            | <b>287</b> | <b>286</b> |
| Sex   |                   |            |            |                   |            |            |                       |            |            |
| Male  | 213               | 216        | 218        | 254               | 257        | 258        | 287                   | 279        | 279        |
| Female  | 221               | 222        | 224        | 267               | 267        | 268        | 297                   | 295        | 292        |
| Race/ethnicity <sup>3</sup>                                 |                   |            |            |                   |            |            |                       |            |            |
| White   | 224               | 229        | 231        | 267               | 271        | 272        | 297                   | 292        | 293        |
| Black   | 192               | 200        | 203        | 237               | 243        | 245        | 273                   | 267        | 267        |
| Hispanic  | 197               | 203        | 205        | 241               | 246        | 247        | 279                   | 273        | 272        |
| Asian/Pacific Islander                                      | 216               | 229        | 232        | 268               | 271        | 271        | 290                   | 286        | 287        |
| American Indian/Alaska Native                               | ‡                 | 204        | 203        | ‡                 | 249        | 247        | ‡                     | ‡          | 279        |
| Parents' education  |                   |            |            |                   |            |            |                       |            |            |
| Did not finish high school                                  | —                 | —          | —          | 243               | 244        | 245        | 275                   | 268        | 268        |
| Graduated from high school                                  | —                 | —          | —          | 251               | 252        | 253        | 283                   | 278        | 274        |
| Some education after high school                            | —                 | —          | —          | 265               | 265        | 266        | 294                   | 289        | 287        |
| Graduated from college                                      | —                 | —          | —          | 271               | 272        | 273        | 301                   | 296        | 297        |
| Locale  |                   |            |            |                   |            |            |                       |            |            |
| Metro-centric codes   |                   |            |            |                   |            |            |                       |            |            |
| Central city  | —                 | 213        | —          | —                 | 257        | —          | —                     | —          | 284        |
| Urban fringe/large town                                     | —                 | 223        | —          | —                 | 266        | —          | —                     | —          | 288        |
| Rural/small town  | —                 | 219        | —          | —                 | 263        | —          | —                     | —          | 285        |
| Urban-centric codes   |                   |            |            |                   |            |            |                       |            |            |
| City  | —                 | —          | 215        | —                 | —          | 257        | —                     | —          | —          |
| Suburban  | —                 | —          | 226        | —                 | —          | 267        | —                     | —          | —          |
| Town  | —                 | —          | 219        | —                 | —          | 262        | —                     | —          | —          |
| Rural   | —                 | —          | 222        | —                 | —          | 264        | —                     | —          | —          |
| Students in school eligible for free or reduced-price lunch |                   |            |            |                   |            |            |                       |            |            |
| 10 percent or less  | —                 | 238        | 240        | —                 | 279        | 280        | —                     | —          | 297        |
| 11-25 percent   | —                 | 230        | 231        | —                 | 270        | 272        | —                     | —          | 290        |
| 26-50 percent   | —                 | 221        | 223        | —                 | 262        | 263        | —                     | —          | 282        |
| 51-75 percent   | —                 | 211        | 212        | —                 | 252        | 253        | —                     | —          | 273        |
| More than 75 percent  | —                 | 197        | 200        | —                 | 240        | 241        | —                     | —          | 266        |

— Not available.

‡ Reporting standards not met (too few cases).

<sup>1</sup> The 2007 National Assessment of Educational Progress (NAEP) Reading Assessments was not administered to 12th-grade students.

<sup>2</sup> Testing accommodations (e.g., extended time, small group testing) for children with disabilities and limited-English-proficient students were not permitted.

<sup>3</sup> Race categories exclude persons of Hispanic ethnicity. For more information on race/ethnicity, see *supplemental note 1*.

NOTE: The National Assessment of Educational Progress (NAEP) reading scale ranges from 0 to 500. Beginning in 2002, the NAEP national sample for grades 4 and 8 was obtained by aggregating the samples from each state and the District of Columbia, rather than by obtaining an independently selected national sample. As a consequence, the size of the national sample for grades 4 and 8 increased, and smaller differences between years or between types of students were found to be statistically significant than would have been detected in previous assessments. For more information on NAEP, see *supplemental note 4*. For more information on race/ethnicity, parents' education, locale, and free or reduced-price lunch eligibility, see *supplemental note 1*.

SOURCE: U.S. Department of Education, National Center for Education Statistics, National Assessment of Educational Progress (NAEP), selected years, 1992-2007 Reading Assessments, NAEP Data Explorer.

## Reading Performance and Achievement Gaps

**Table A-12-3. Average reading scale scores and achievement-level results for public school 4th- and 8th-graders, by state: Selected years, 1992-2007**

| State                | Grade 4           |             |                             |            |                                  |            | Grade 8           |            |                             |           |                                  |           |
|----------------------|-------------------|-------------|-----------------------------|------------|----------------------------------|------------|-------------------|------------|-----------------------------|-----------|----------------------------------|-----------|
|                      | Average score     |             | Percentage of students      |            |                                  |            | Average score     |            | Percentage of students      |           |                                  |           |
|                      |                   |             | At or above<br><i>Basic</i> |            | At or above<br><i>Proficient</i> |            |                   |            | At or above<br><i>Basic</i> |           | At or above<br><i>Proficient</i> |           |
|                      | 1992 <sup>1</sup> | 2007        | 1992 <sup>1</sup>           | 2007       | 1992 <sup>1</sup>                | 2007       | 1998 <sup>2</sup> | 2007       | 1998 <sup>2</sup>           | 2007      | 1998 <sup>2</sup>                | 2007      |
| <b>United States</b> | <b>215</b>        | <b>220*</b> | <b>60</b>                   | <b>66*</b> | <b>27</b>                        | <b>32*</b> | <b>261</b>        | <b>261</b> | <b>71</b>                   | <b>73</b> | <b>30</b>                        | <b>29</b> |
| Alabama              | 207               | 216*        | 51                          | 62*        | 20                               | 29*        | 255               | 252        | 67                          | 62*       | 22                               | 21        |
| Alaska               | —                 | 214         | —                           | 62         | —                                | 29         | —                 | 259        | —                           | 71        | —                                | 27        |
| Arizona              | 209               | 210         | 54                          | 56         | 21                               | 24         | 260               | 255*       | 72                          | 65*       | 27                               | 24        |
| Arkansas             | 211               | 217*        | 56                          | 64*        | 23                               | 29*        | 256               | 258        | 68                          | 70        | 23                               | 25        |
| California           | 202               | 209*        | 48                          | 53*        | 19                               | 23         | 252               | 251        | 63                          | 62        | 21                               | 21        |
| Colorado             | 217               | 224*        | 64                          | 70*        | 25                               | 36*        | 264               | 266        | 77                          | 79        | 30                               | 35*       |
| Connecticut          | 222               | 227*        | 69                          | 73         | 34                               | 41*        | 270               | 267        | 81                          | 77        | 40                               | 37        |
| Delaware             | 213               | 225*        | 57                          | 73*        | 24                               | 34*        | 254               | 265*       | 64                          | 77*       | 23                               | 31*       |
| District of Columbia | 188               | 197*        | 30                          | 39*        | 10                               | 14*        | 236               | 241*       | 44                          | 48        | 11                               | 12        |
| Florida              | 208               | 224*        | 53                          | 70*        | 21                               | 34*        | 255               | 260*       | 67                          | 71*       | 23                               | 28*       |
| Georgia              | 212               | 219*        | 57                          | 66*        | 25                               | 28         | 257               | 259        | 68                          | 70        | 25                               | 26        |
| Hawaii               | 203               | 213*        | 48                          | 59*        | 17                               | 26*        | 249               | 251        | 59                          | 62*       | 19                               | 20        |
| Idaho                | 219               | 223*        | 67                          | 70*        | 28                               | 35*        | —                 | 265        | —                           | 78        | —                                | 32        |
| Illinois             | —                 | 219         | —                           | 65         | —                                | 32         | —                 | 263        | —                           | 75        | —                                | 30        |
| Indiana              | 221               | 222         | 68                          | 68         | 30                               | 33         | —                 | 264        | —                           | 76        | —                                | 31        |
| Iowa                 | 225               | 225         | 73                          | 74         | 36                               | 36         | —                 | 267        | —                           | 80        | —                                | 36        |
| Kansas               | —                 | 225         | —                           | 72         | —                                | 36         | 268               | 267        | 81                          | 81        | 36                               | 35        |
| Kentucky             | 213               | 222*        | 58                          | 68*        | 23                               | 33*        | 262               | 262        | 74                          | 73        | 30                               | 28        |
| Louisiana            | 204               | 207         | 46                          | 52*        | 15                               | 20*        | 252               | 253        | 63                          | 64        | 17                               | 19        |
| Maine                | 227               | 226         | 75                          | 73         | 36                               | 36         | 271               | 270        | 83                          | 83        | 41                               | 37        |
| Maryland             | 211               | 225*        | 57                          | 69*        | 24                               | 36*        | 261               | 265        | 70                          | 76*       | 31                               | 33        |
| Massachusetts        | 226               | 236*        | 74                          | 81*        | 36                               | 49*        | 269               | 273*       | 79                          | 84*       | 38                               | 43*       |
| Michigan             | 216               | 220*        | 62                          | 66         | 26                               | 32*        | —                 | 260        | —                           | 72        | —                                | 28        |
| Minnesota            | 221               | 225*        | 68                          | 73*        | 31                               | 37*        | 265               | 268        | 78                          | 80        | 36                               | 37        |
| Mississippi          | 199               | 208*        | 41                          | 51*        | 14                               | 19*        | 251               | 250        | 62                          | 60        | 19                               | 17        |
| Missouri             | 220               | 221         | 67                          | 67         | 30                               | 32         | 262               | 263        | 75                          | 75        | 28                               | 31        |
| Montana              | —                 | 227         | —                           | 75         | —                                | 39         | 271               | 271        | 83                          | 85        | 40                               | 39        |
| Nebraska             | 221               | 223         | 68                          | 71         | 31                               | 35         | —                 | 267        | —                           | 79        | —                                | 35        |
| Nevada               | —                 | 211         | —                           | 57         | —                                | 24         | 258               | 252*       | 70                          | 63*       | 23                               | 22        |
| New Hampshire        | 228               | 229         | 76                          | 76         | 38                               | 41         | —                 | 270        | —                           | 82        | —                                | 37        |

See notes at end of table.

**Table A-12-3. Average reading scale scores and achievement-level results for public school 4th- and 8th-graders, by state: Selected years, 1992–2007—Continued**

| State                | Grade 4           |                   |                             |                   |                                  |                   | Grade 8           |                   |                             |                   |                                  |                   |           |
|----------------------|-------------------|-------------------|-----------------------------|-------------------|----------------------------------|-------------------|-------------------|-------------------|-----------------------------|-------------------|----------------------------------|-------------------|-----------|
|                      | Average score     |                   | Percentage of students      |                   |                                  |                   | Average score     |                   | Percentage of students      |                   |                                  |                   |           |
|                      | 1992 <sup>1</sup> | 2007              | At or above<br><i>Basic</i> |                   | At or above<br><i>Proficient</i> |                   | 1998 <sup>2</sup> | 2007              | At or above<br><i>Basic</i> |                   | At or above<br><i>Proficient</i> |                   |           |
|                      |                   | 1992 <sup>1</sup> | 2007                        | 1992 <sup>1</sup> | 2007                             | 1992 <sup>1</sup> | 2007              | 1998 <sup>2</sup> | 2007                        | 1998 <sup>2</sup> | 2007                             | 1998 <sup>2</sup> | 2007      |
| <b>United States</b> | <b>215</b>        | <b>220*</b>       | <b>60</b>                   | <b>66*</b>        | <b>27</b>                        | <b>32*</b>        | <b>261</b>        | <b>261</b>        | <b>71</b>                   | <b>73</b>         | <b>30</b>                        | <b>29</b>         | <b>29</b> |
| New Jersey           | 223               | 231*              | 69                          | 77*               | 35                               | 43*               | —                 | 270               | —                           | 81                | —                                | —                 | 39        |
| New Mexico           | 211               | 212               | 55                          | 58                | 23                               | 24                | 258               | 251*              | 71                          | 62*               | 23                               | 17*               | 17*       |
| New York             | 215               | 224*              | 61                          | 69*               | 27                               | 36*               | 265               | 264               | 76                          | 75                | 32                               | 32                | 32        |
| North Carolina       | 212               | 218*              | 56                          | 64*               | 25                               | 29*               | 262               | 259*              | 74                          | 71                | 30                               | 28                | 28        |
| North Dakota         | 226               | 226               | 74                          | 75                | 35                               | 35                | —                 | 268               | —                           | 84                | —                                | 32                | 32        |
| Ohio                 | 217               | 226*              | 63                          | 73*               | 27                               | 36*               | —                 | 268               | —                           | 79                | —                                | 36                | 36        |
| Oklahoma             | 220               | 217*              | 67                          | 65                | 29                               | 27                | 265               | 260*              | 80                          | 72*               | 30                               | 26                | 26        |
| Oregon               | —                 | 215               | —                           | 62                | —                                | 28                | 266               | 266               | 78                          | 77                | 35                               | 34                | 34        |
| Pennsylvania         | 221               | 226*              | 68                          | 73*               | 32                               | 40*               | —                 | 268               | —                           | 79                | —                                | 36                | 36        |
| Rhode Island         | 217               | 219               | 63                          | 65                | 28                               | 31                | 264               | 258*              | 76                          | 69*               | 32                               | 27*               | 27*       |
| South Carolina       | 210               | 214*              | 53                          | 59*               | 22                               | 26*               | 255               | 257               | 66                          | 69                | 22                               | 25                | 25        |
| South Dakota         | —                 | 223               | —                           | 71                | —                                | 34                | —                 | 270               | —                           | 83                | —                                | 37                | 37        |
| Tennessee            | 212               | 216               | 57                          | 61                | 23                               | 27                | 258               | 259               | 71                          | 71                | 27                               | 26                | 26        |
| Texas                | 213               | 220*              | 57                          | 66*               | 24                               | 30*               | 261               | 261               | 74                          | 73                | 27                               | 28                | 28        |
| Utah                 | 220               | 221               | 67                          | 69                | 30                               | 34                | 263               | 262               | 77                          | 75                | 31                               | 30                | 30        |
| Vermont              | —                 | 228               | —                           | 74                | —                                | 41                | —                 | 273               | —                           | 84                | —                                | 42                | 42        |
| Virginia             | 221               | 227*              | 67                          | 74*               | 31                               | 38*               | 266               | 267               | 78                          | 79                | 33                               | 34                | 34        |
| Washington           | —                 | 224               | —                           | 70                | —                                | 36                | 264               | 265               | 76                          | 77                | 32                               | 34                | 34        |
| West Virginia        | 216               | 215               | 61                          | 63                | 25                               | 28                | 262               | 255*              | 75                          | 68*               | 28                               | 23*               | 23*       |
| Wisconsin            | 224               | 223               | 71                          | 70                | 33                               | 36                | 265               | 264               | 78                          | 76                | 34                               | 33                | 33        |
| Wyoming              | 223               | 225               | 71                          | 73                | 33                               | 36*               | 263               | 266*              | 76                          | 80                | 31                               | 33                | 33        |

— Not available (state did not participate in assessment).

\*Change in score is statistically significant from 1992 or 1998 ( $p < .05$ ).

<sup>1</sup> 1992 was the first year for state-level data in grade 4. Testing accommodations (e.g., extended time, small group testing) for children with disabilities and limited-English-proficient students were not permitted.

<sup>2</sup> 1998 was the first year for state-level data in grade 8. Testing accommodations (e.g., extended time, small group testing) for children with disabilities and limited-English-proficient students were permitted.

NOTE: The National Assessment of Educational Progress (NAEP) reading scale ranges from 0 to 500. State samples were not collected for grade 12; therefore, state results for grade 12 are not available. At the state level, NAEP includes only students in public schools, while other reported national results in this indicator include both public and private school students. Variations or changes in exclusion rates for students with disabilities and limited-English-proficient students in the NAEP samples may affect comparative performance results. The 2007 NAEP national sample for grades 4 and 8 was obtained by aggregating the samples from each state and the District of Columbia, rather than by obtaining an independently selected national sample. As a consequence, the size of the national samples for grades 4 and 8 increased, and smaller differences between years or between types of students were found to be statistically significant than would have been detected in previous assessments. For more information on NAEP, see *supplemental note 4*.

SOURCE: U.S. Department of Education, National Center for Education Statistics, National Assessment of Educational Progress (NAEP), selected years, 1992–2007 Reading Assessments, NAEP Data Explorer.

## Reading Performance and Achievement Gaps

**Table S-12-1. Standard errors for the average reading scale scores and percentage of students at each achievement level, by grade: Selected years, 1992-2007**

| Grade, scale score, and achievement level | 1992 | 1994 | 1998 | 1998 | 2002 | 2003 | 2005 | 2007 |
|---|------|------|------|------|------|------|------|------|
| <b>Grade 4</b>                            |      |      |      |      |      |      |      |      |
| Average scale score                       | 0.9  | 1.0  | 0.8  | 1.1  | 0.4  | 0.3  | 0.2  | 0.3  |
| Percentage at each achievement level      |      |      |      |      |      |      |      |      |
| Below <i>Basic</i>                        | 1.1  | 1.0  | 0.9  | 1.2  | 0.5  | 0.3  | 0.3  | 0.3  |
| At or above <i>Basic</i>                  | 1.1  | 1.0  | 0.9  | 1.2  | 0.5  | 0.3  | 0.3  | 0.3  |
| At or above <i>Proficient</i>             | 1.2  | 1.1  | 0.9  | 0.9  | 0.4  | 0.3  | 0.2  | 0.3  |
| At <i>Advanced</i>                        | 0.6  | 0.7  | 0.5  | 0.5  | 0.2  | 0.1  | 0.1  | 0.2  |
| <b>Grade 8</b>                            |      |      |      |      |      |      |      |      |
| Average scale score                       | 0.9  | 0.8  | 0.8  | 0.8  | 0.4  | 0.3  | 0.2  | 0.2  |
| Percentage at each achievement level      |      |      |      |      |      |      |      |      |
| Below <i>Basic</i>                        | 1.0  | 0.9  | 0.9  | 0.8  | 0.5  | 0.3  | 0.2  | 0.2  |
| At or above <i>Basic</i>                  | 1.0  | 0.9  | 0.9  | 0.8  | 0.5  | 0.3  | 0.2  | 0.2  |
| At or above <i>Proficient</i>             | 1.1  | 0.9  | 0.9  | 1.1  | 0.5  | 0.3  | 0.2  | 0.2  |
| At <i>Advanced</i>                        | 0.3  | 0.3  | 0.4  | 0.3  | 0.2  | 0.1  | 0.1  | 0.1  |
| <b>Grade 12</b>                           |      |      |      |      |      |      |      |      |
| Average scale score                       | 0.6  | 0.7  | 0.7  | 0.6  | 0.7  | †    | 0.6  | †    |
| Percentage at each achievement level      |      |      |      |      |      |      |      |      |
| Below <i>Basic</i>                        | 0.6  | 0.7  | 0.9  | 0.7  | 0.8  | †    | 0.8  | †    |
| At or above <i>Basic</i>                  | 0.6  | 0.7  | 0.9  | 0.7  | 0.8  | †    | 0.8  | †    |
| At or above <i>Proficient</i>             | 0.8  | 1.0  | 0.9  | 0.7  | 0.8  | †    | 0.7  | †    |
| At <i>Advanced</i>                        | 0.3  | 0.5  | 0.4  | 0.4  | 0.3  | †    | 0.3  | †    |

† Not applicable.

SOURCE: U.S. Department of Education, National Center for Education Statistics, National Assessment of Educational Progress (NAEP), selected years, 1992-2007 Reading Assessments, NAEP Data Explorer.

**Table S-12-2. Standard errors for the average reading scale scores, by grade and selected student and school characteristics: Selected years, 1992-2007**

| Student or school characteristic                            | Grade 4    |            |            | Grade 8    |            |            | Grade 12   |            |            |
|---|------------|------------|------------|------------|------------|------------|------------|------------|------------|
|   | 1992       | 2005       | 2007       | 1992       | 2005       | 2007       | 1992       | 2002       | 2005       |
| <b>Total</b>  | <b>0.9</b> | <b>0.2</b> | <b>0.3</b> | <b>0.9</b> | <b>0.2</b> | <b>0.2</b> | <b>0.6</b> | <b>0.7</b> | <b>0.6</b> |
| Sex   |            |            |            |            |            |            |            |            |            |
| Male  | 1.2        | 0.2        | 0.3        | 1.1        | 0.2        | 0.3        | 0.7        | 0.9        | 0.8        |
| Female  | 1.0        | 0.3        | 0.3        | 1.0        | 0.2        | 0.3        | 0.7        | 0.7        | 0.7        |
| Race/ethnicity  |            |            |            |            |            |            |            |            |            |
| White   | 1.2        | 0.2        | 0.2        | 1.1        | 0.2        | 0.2        | 0.6        | 0.7        | 0.7        |
| Black   | 1.7        | 0.3        | 0.4        | 1.7        | 0.4        | 0.4        | 1.4        | 1.3        | 1.2        |
| Hispanic  | 2.6        | 0.5        | 0.5        | 1.6        | 0.4        | 0.4        | 2.7        | 1.5        | 1.2        |
| Asian/Pacific Islander                                      | 2.9        | 0.7        | 1.0        | 3.9        | 0.8        | 1.1        | 3.2        | 2.0        | 1.9        |
| American Indian/Alaska Native                               | †          | 1.3        | 1.2        | †          | 1.4        | 1.2        | †          | †          | 6.3        |
| Parents' education  |            |            |            |            |            |            |            |            |            |
| Did not finish high school                                  | †          | †          | †          | 1.4        | 0.5        | 0.5        | 1.4        | 1.5        | 1.7        |
| Graduated from high school                                  | †          | †          | †          | 1.4        | 0.4        | 0.4        | 0.8        | 1.1        | 0.9        |
| Some education after high school                            | †          | †          | †          | 1.1        | 0.3        | 0.3        | 0.8        | 1.0        | 0.8        |
| Graduated from college                                      | †          | †          | †          | 1.0        | 0.2        | 0.2        | 0.8        | 0.8        | 0.7        |
| Locale  |            |            |            |            |            |            |            |            |            |
| Metro-centric codes   |            |            |            |            |            |            |            |            |            |
| Central city  | †          | 0.4        | †          | †          | 0.4        | †          | †          | †          | 1.1        |
| Urban fringe/large town                                     | †          | 0.3        | †          | †          | 0.3        | †          | †          | †          | 1.0        |
| Rural/small town  | †          | 0.3        | †          | †          | 0.4        | †          | †          | †          | 1.1        |
| Urban-centric codes   |            |            |            |            |            |            |            |            |            |
| City  | †          | †          | 0.6        | †          | †          | 0.5        | †          | †          | †          |
| Suburban  | †          | †          | 0.4        | †          | †          | 0.4        | †          | †          | †          |
| Town  | †          | †          | 0.6        | †          | †          | 0.5        | †          | †          | †          |
| Rural   | †          | †          | 0.4        | †          | †          | 0.4        | †          | †          | †          |
| Students in school eligible for free or reduced-price lunch |            |            |            |            |            |            |            |            |            |
| 10 percent or less  | †          | 0.5        | 0.6        | †          | 0.4        | 0.6        | †          | †          | 2.0        |
| 11-25 percent   | †          | 0.3        | 0.5        | †          | 0.4        | 0.5        | †          | †          | 1.3        |
| 26-50 percent   | †          | 0.3        | 0.4        | †          | 0.3        | 0.4        | †          | †          | 1.1        |
| 51-75 percent   | †          | 0.4        | 0.4        | †          | 0.4        | 0.5        | †          | †          | 1.8        |
| More than 75 percent  | †          | 0.4        | 0.5        | †          | 0.6        | 0.7        | †          | †          | 2.0        |

† Not applicable.

SOURCE: U.S. Department of Education, National Center for Education Statistics, National Assessment of Educational Progress (NAEP), selected years, 1992-2007 Reading Assessments, NAEP Data Explorer.

## Reading Performance and Achievement Gaps

Table S-12-3. Standard errors for the average reading scale scores and achievement-level results for public school 4th- and 8th-graders, by state: Selected years, 1992-2007

| State                | Grade 4       |            |                             |            |                                  |            | Grade 8       |            |                             |            |                                  |            |
|----------------------|---------------|------------|-----------------------------|------------|----------------------------------|------------|---------------|------------|-----------------------------|------------|----------------------------------|------------|
|                      | Average score |            | Percentage of students      |            |                                  |            | Average score |            | Percentage of students      |            |                                  |            |
|                      |               |            | At or above<br><i>Basic</i> |            | At or above<br><i>Proficient</i> |            |               |            | At or above<br><i>Basic</i> |            | At or above<br><i>Proficient</i> |            |
|                      | 1992          | 2007       | 1992                        | 2007       | 1992                             | 2007       | 1998          | 2007       | 1998                        | 2007       | 1998                             | 2007       |
| <b>United States</b> | <b>1.0</b>    | <b>0.3</b> | <b>1.1</b>                  | <b>0.3</b> | <b>1.3</b>                       | <b>0.3</b> | <b>0.8</b>    | <b>0.2</b> | <b>0.8</b>                  | <b>0.3</b> | <b>1.1</b>                       | <b>0.2</b> |
| Alabama              | 1.7           | 1.3        | 2.1                         | 1.4        | 1.5                              | 1.4        | 1.4           | 1.0        | 2.1                         | 1.2        | 1.9                              | 1.3        |
| Alaska               | †             | 1.0        | †                           | 1.2        | †                                | 1.0        | †             | 1.0        | †                           | 1.2        | †                                | 1.2        |
| Arizona              | 1.2           | 1.6        | 1.8                         | 1.7        | 1.2                              | 1.5        | 1.1           | 1.2        | 1.5                         | 1.6        | 1.4                              | 1.4        |
| Arkansas             | 1.2           | 1.2        | 1.5                         | 1.3        | 1.2                              | 1.3        | 1.3           | 1.0        | 1.4                         | 1.3        | 1.4                              | 1.1        |
| California           | 2.0           | 1.0        | 2.2                         | 1.0        | 1.7                              | 0.9        | 1.6           | 0.8        | 2.0                         | 0.8        | 1.9                              | 0.8        |
| Colorado             | 1.1           | 1.1        | 1.6                         | 1.3        | 1.4                              | 1.4        | 1.0           | 1.0        | 1.2                         | 1.2        | 1.4                              | 1.5        |
| Connecticut          | 1.3           | 1.3        | 1.7                         | 1.4        | 1.4                              | 1.6        | 1.0           | 1.6        | 1.4                         | 1.7        | 1.6                              | 1.7        |
| Delaware             | 0.6           | 0.7        | 1.2                         | 1.2        | 1.1                              | 1.4        | 1.3           | 0.6        | 2.0                         | 0.8        | 1.4                              | 1.2        |
| District of Columbia | 0.8           | 0.9        | 1.0                         | 1.1        | 0.6                              | 0.8        | 2.1           | 0.7        | 2.4                         | 1.1        | 1.0                              | 1.0        |
| Florida              | 1.2           | 0.8        | 1.6                         | 1.0        | 1.1                              | 1.0        | 1.4           | 1.2        | 1.8                         | 1.3        | 1.7                              | 1.3        |
| Georgia              | 1.5           | 0.9        | 1.7                         | 1.3        | 1.5                              | 1.5        | 1.4           | 1.0        | 1.7                         | 1.4        | 1.4                              | 1.4        |
| Hawaii               | 1.7           | 1.1        | 1.9                         | 1.4        | 1.5                              | 1.4        | 1.0           | 0.8        | 1.3                         | 1.0        | 1.2                              | 0.9        |
| Idaho                | 0.9           | 0.8        | 1.3                         | 1.0        | 1.2                              | 1.2        | †             | 0.9        | †                           | 0.8        | †                                | 1.3        |
| Illinois             | †             | 1.2        | †                           | 1.6        | †                                | 1.3        | †             | 1.0        | †                           | 1.1        | †                                | 1.5        |
| Indiana              | 1.3           | 0.9        | 1.6                         | 1.2        | 1.5                              | 1.3        | †             | 1.1        | †                           | 1.1        | †                                | 1.5        |
| Iowa                 | 1.1           | 1.1        | 1.4                         | 1.6        | 1.6                              | 1.4        | †             | 0.9        | †                           | 1.0        | †                                | 1.4        |
| Kansas               | †             | 1.1        | †                           | 1.2        | †                                | 1.5        | 1.4           | 0.8        | 1.6                         | 1.0        | 1.8                              | 1.2        |
| Kentucky             | 1.3           | 1.1        | 1.7                         | 1.4        | 1.6                              | 1.4        | 1.4           | 1.0        | 1.7                         | 1.2        | 1.8                              | 1.2        |
| Louisiana            | 1.2           | 1.6        | 1.6                         | 2.0        | 1.1                              | 1.4        | 1.4           | 1.1        | 1.9                         | 1.6        | 1.5                              | 1.2        |
| Maine                | 1.1           | 0.9        | 1.4                         | 1.1        | 1.7                              | 1.4        | 1.2           | 0.8        | 1.4                         | 1.0        | 1.9                              | 1.3        |
| Maryland             | 1.6           | 1.1        | 1.8                         | 1.3        | 1.2                              | 1.5        | 1.8           | 1.2        | 1.9                         | 1.3        | 2.1                              | 1.5        |
| Massachusetts        | 0.9           | 1.1        | 1.3                         | 1.1        | 1.5                              | 1.7        | 1.4           | 1.0        | 1.3                         | 0.9        | 1.7                              | 1.5        |
| Michigan             | 1.5           | 1.4        | 1.9                         | 1.7        | 2.0                              | 1.6        | †             | 1.2        | †                           | 1.5        | †                                | 1.3        |
| Minnesota            | 1.2           | 1.1        | 1.7                         | 1.3        | 1.5                              | 1.5        | 1.4           | 0.9        | 1.4                         | 1.2        | 1.7                              | 1.2        |
| Mississippi          | 1.3           | 1.0        | 1.7                         | 1.4        | 0.9                              | 1.0        | 1.2           | 1.1        | 1.7                         | 1.4        | 1.2                              | 1.4        |
| Missouri             | 1.2           | 1.1        | 1.5                         | 1.3        | 1.5                              | 1.3        | 1.3           | 1.0        | 1.8                         | 1.1        | 1.6                              | 1.2        |
| Montana              | †             | 1.0        | †                           | 1.0        | †                                | 1.8        | 1.3           | 0.8        | 1.6                         | 1.0        | 1.5                              | 1.4        |
| Nebraska             | 1.1           | 1.3        | 1.5                         | 1.4        | 1.5                              | 1.5        | †             | 0.9        | †                           | 1.2        | †                                | 1.3        |
| Nevada               | †             | 1.2        | †                           | 1.3        | †                                | 1.3        | 1.0           | 0.8        | 1.3                         | 0.9        | 1.2                              | 1.0        |
| New Hampshire        | 1.2           | 0.9        | 1.8                         | 0.9        | 1.6                              | 1.5        | †             | 0.9        | †                           | 1.2        | †                                | 1.3        |

See notes at end of table.

**Table S-12-3. Standard errors for the average reading scale scores and achievement-level results for public school 4th- and 8th-graders, by state: Selected years, 1992–2007—Continued**

| State                | Grade 4       |            |                             |            |                                  |            | Grade 8       |            |                             |            |                                  |            |
|----------------------|---------------|------------|-----------------------------|------------|----------------------------------|------------|---------------|------------|-----------------------------|------------|----------------------------------|------------|
|                      | Average score |            | Percentage of students      |            |                                  |            | Average score |            | Percentage of students      |            |                                  |            |
|                      |               |            | At or above<br><i>Basic</i> |            | At or above<br><i>Proficient</i> |            |               |            | At or above<br><i>Basic</i> |            | At or above<br><i>Proficient</i> |            |
|                      | 1992          | 2007       | 1992                        | 2007       | 1992                             | 2007       | 1998          | 2007       | 1998                        | 2007       | 1998                             | 2007       |
| <b>United States</b> | <b>1.0</b>    | <b>0.3</b> | <b>1.1</b>                  | <b>0.3</b> | <b>1.3</b>                       | <b>0.3</b> | <b>0.8</b>    | <b>0.2</b> | <b>0.8</b>                  | <b>0.3</b> | <b>1.1</b>                       | <b>0.2</b> |
| New Jersey           | 1.4           | 1.2        | 1.8                         | 1.3        | 1.8                              | 1.5        | †             | 1.1        | †                           | 1.0        | †                                | 1.5        |
| New Mexico           | 1.5           | 1.3        | 1.7                         | 1.5        | 1.7                              | 1.6        | 1.2           | 0.8        | 1.7                         | 1.3        | 1.3                              | 0.9        |
| New York             | 1.4           | 1.0        | 1.4                         | 1.2        | 1.3                              | 1.3        | 1.5           | 1.1        | 1.7                         | 1.3        | 1.9                              | 1.4        |
| North Carolina       | 1.1           | 0.9        | 1.4                         | 1.2        | 1.3                              | 1.1        | 1.1           | 1.1        | 1.2                         | 1.3        | 1.4                              | 1.1        |
| North Dakota         | 1.1           | 0.9        | 1.8                         | 1.2        | 1.5                              | 1.4        | †             | 0.7        | †                           | 1.0        | †                                | 1.3        |
| Ohio                 | 1.3           | 1.1        | 1.7                         | 1.5        | 1.6                              | 1.6        | †             | 1.2        | †                           | 1.2        | †                                | 1.6        |
| Oklahoma             | 0.9           | 1.1        | 1.2                         | 1.5        | 1.3                              | 1.2        | 1.2           | 0.8        | 1.2                         | 1.0        | 1.9                              | 1.2        |
| Oregon               | †             | 1.4        | †                           | 1.5        | †                                | 1.5        | 1.5           | 0.9        | 1.4                         | 1.2        | 2.1                              | 1.7        |
| Pennsylvania         | 1.3           | 1.0        | 1.7                         | 1.3        | 1.7                              | 1.1        | †             | 1.2        | †                           | 1.4        | †                                | 1.5        |
| Rhode Island         | 1.8           | 1.0        | 2.2                         | 1.2        | 1.7                              | 1.2        | 0.9           | 0.9        | 1.4                         | 1.2        | 1.2                              | 1.1        |
| South Carolina       | 1.3           | 1.2        | 1.9                         | 1.5        | 1.4                              | 1.3        | 1.1           | 0.9        | 1.6                         | 1.2        | 1.0                              | 1.4        |
| South Dakota         | †             | 1.0        | †                           | 1.2        | †                                | 1.6        | †             | 0.7        | †                           | 0.9        | †                                | 1.9        |
| Tennessee            | 1.4           | 1.2        | 1.7                         | 1.6        | 1.5                              | 1.2        | 1.2           | 1.0        | 1.5                         | 1.3        | 1.6                              | 1.1        |
| Texas                | 1.6           | 0.9        | 2.0                         | 1.1        | 1.8                              | 1.1        | 1.4           | 0.9        | 1.7                         | 1.0        | 1.6                              | 1.2        |
| Utah                 | 1.1           | 1.2        | 1.6                         | 1.4        | 1.6                              | 1.4        | 1.0           | 1.0        | 1.2                         | 1.1        | 1.6                              | 1.2        |
| Vermont              | †             | 0.8        | †                           | 1.2        | †                                | 1.2        | †             | 0.8        | †                           | 1.1        | †                                | 1.3        |
| Virginia             | 1.4           | 1.1        | 1.8                         | 1.5        | 1.6                              | 1.4        | 1.1           | 1.1        | 1.2                         | 1.2        | 1.3                              | 1.6        |
| Washington           | †             | 1.4        | †                           | 1.5        | †                                | 1.7        | 1.2           | 0.9        | 1.5                         | 1.1        | 1.7                              | 1.3        |
| West Virginia        | 1.3           | 1.1        | 1.4                         | 1.2        | 1.4                              | 1.1        | 1.0           | 1.0        | 1.2                         | 1.2        | 1.1                              | 1.1        |
| Wisconsin            | 1.0           | 1.2        | 1.3                         | 1.4        | 1.3                              | 1.4        | 1.8           | 1.0        | 2.2                         | 1.3        | 1.8                              | 1.7        |
| Wyoming              | 1.1           | 0.5        | 1.6                         | 1.0        | 1.5                              | 1.0        | 1.3           | 0.7        | 1.8                         | 1.1        | 1.5                              | 1.0        |

† Not applicable.

SOURCE: U.S. Department of Education, National Center for Education Statistics, National Assessment of Educational Progress (NAEP), selected years, 1992–2007 Reading Assessments, NAEP Data Explorer.